

140202
Lung Cancer Tissue Bank
CRA Workshop

William Richards, Ph.D

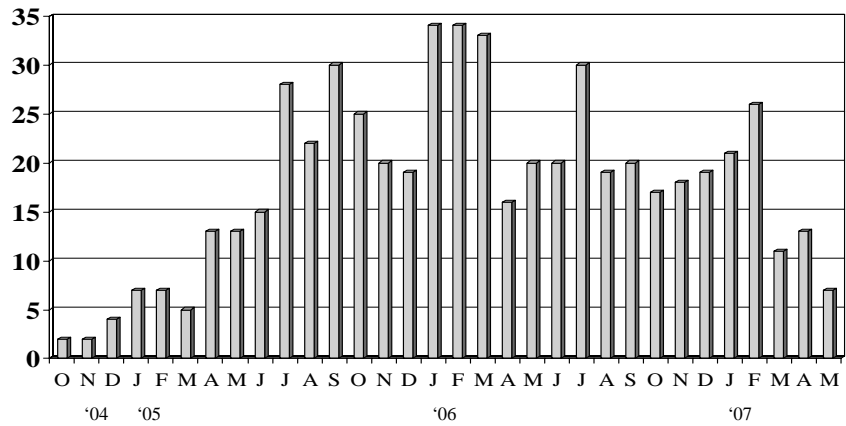
June 21, 2007

Registrations	834	
Off-study	280	34%
Evaluable	554	66%
Months participation		
Evaluable/month	21.03	
Pre-op blood (received)	538	97%
Pre-op blood overnight	504	94%
Post-op blood (received)	419	76%
Post-op blood overnight	381	91%
PO blood w/in window	294	70%
Tissue received	552	100%
Tissue overnight	523	95%
Tissue Weighing Completed	417	76%
Tumor mass, grams (median, range)	0.618	.034-9.04
Tumor # Aliquots (median, range)	6	1-40
Tumor % low (median, range)	20	0-95
Tumor % high (median, range)	55	0-95
Tumor >= 80%	109	20%
Tumor <= 10%	38	7%
Paraffin submitted	404	73%
Data forms submitted (overall)	469	85%
Data forms complete and correct	318	68%
Follow-up forms submitted	723	???
Follow-up forms complete and correct	317	44%
RNA QC Completed	487	88%
RIN (median, range)	7.7	1.9-9.7
RNA intact	337	69%
RNA minimally degraded	87	18%
RNA partially degraded	34	7%
RNA totally degraded	29	6%

140202 Accrual

Total enrolled	836
Eligible	556 (67%)
Pre-op blood	538 (97%)
Post-op blood	421 (76%)
Frozen Tissue	554 (100%)
Paraffin blocks/slides	405 (73%)

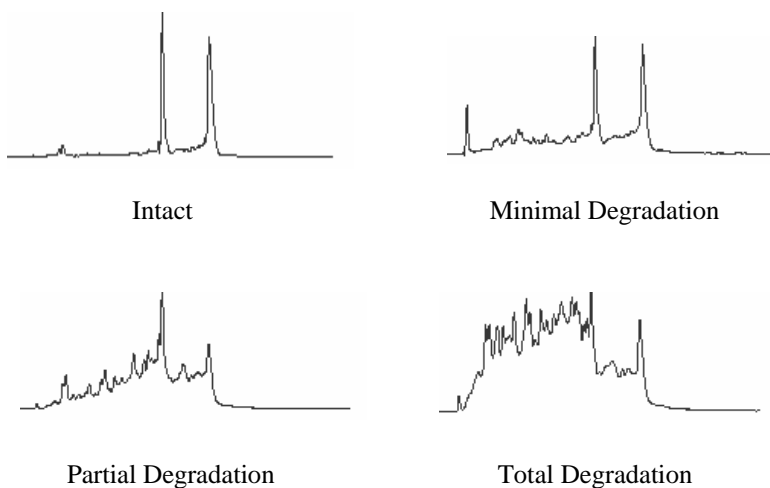
Monthly accrual



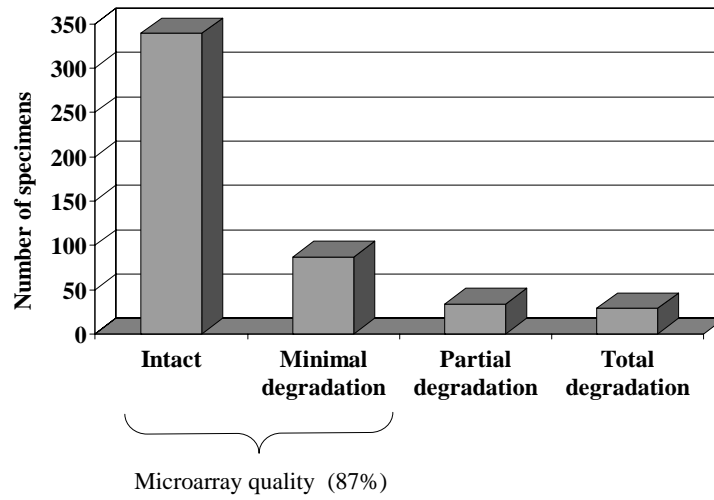
Tumor Sample Q/C

Cases weighed	419	76%
Median tumor mass	1 0.618g	0.034-9.04g
Tumor # aliquots	10 6	1-40
Tumor % low	20	0-95
Tumor % high	55	0-95
Tumor \geq 80%	109	20%
Tumor $<$ 20%	38	7%

RNA quality

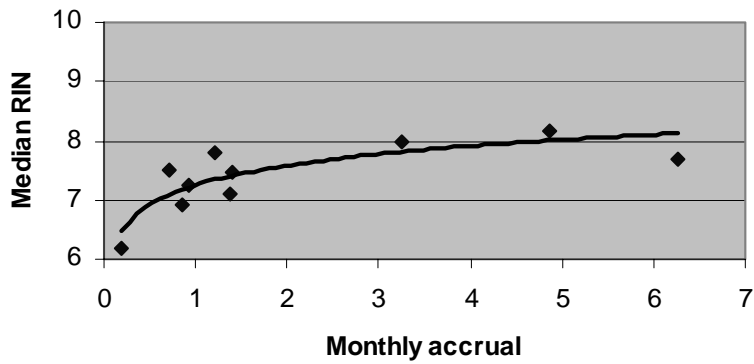


RNA quality



Median RIN = 7.7 (range 1.9-9.7) N = 489 (88%)

Effect of Institutional Accrual Activity



Anotation Data Q/C

- 100% audit by 2 individuals
- consensus conference
- Report to DMC
- quarterly report to SQAC
- SQAC report to IPEC
- Feedback to institutions by letter
- Report Card to CRAs at semi-annual workshop

Anotation Data Q/C

Data forms submitted	470	85%
Complete and correct	319	68%
Follow-up submitted	723	N/A
Complete and correct	317	44%